

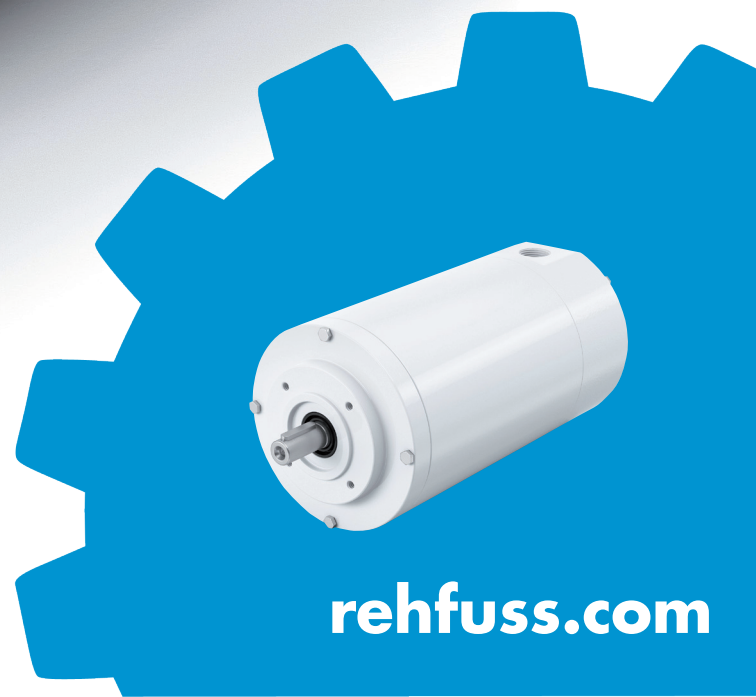


SMOOTH BODY 3-PHASE MOTOR SB71

The smooth motor for „clean“ applications



**success based on
quality and reliability**



rehfuss.com

EFFICIENT, POWERFUL AND SMOOTH SURFACE

Smooth Body Motor SB71
4-pole asynchronous 3-phase motor

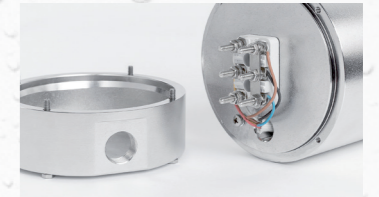
OPTIMIZED SEALING MATERIALS
Can be individually adapted to operations conditions.

SUITABLE FOR FREQUENCY INVERTER
Motor winding, insulation system are optimized for mains or frequency operation. Efficiency class IE3.

POLISHED SURFACE
Optimum surface quality for reduced germ formation.

RADIAL CABLE ENTRY
Position of cable entry can be determined 4 x 90° during installation.

INTEGRATED TERMINAL BOARD
Easy and secure mains connection.



HIGH PROTECTION CLASS
IP66 (Optional IP69K) for wash-down-applications.

SMOOTHING HOUSING SURFACE
Smooth, round inline-housing for easy and thoroughly cleaning.



Picture shows version SBH1 with options

THE SMOOTH ONE FROM REHFUSS

OPTIONS (excerpt)



Cable gland Stainless steel



Cable gland Stainless steel hygienic EHEDG certificated



Combination with gearboxes of the Rehffuss gearbox modular system

VARIATIONS



SBA
Smooth body motor Aluminium with coating

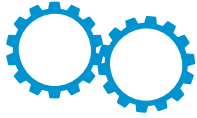


SBE
Smooth body motor Stainless steel



SBH
Smooth body motor Stainless steel in hygienic-design

HIGHLIGHTS



HIGH EFFICIENCY



HOUSING ALSO IN
STAINLESS STEEL VERSION



LOW NOISE



EASY CLEANING THANKS TO
SMOOTH SURFACE

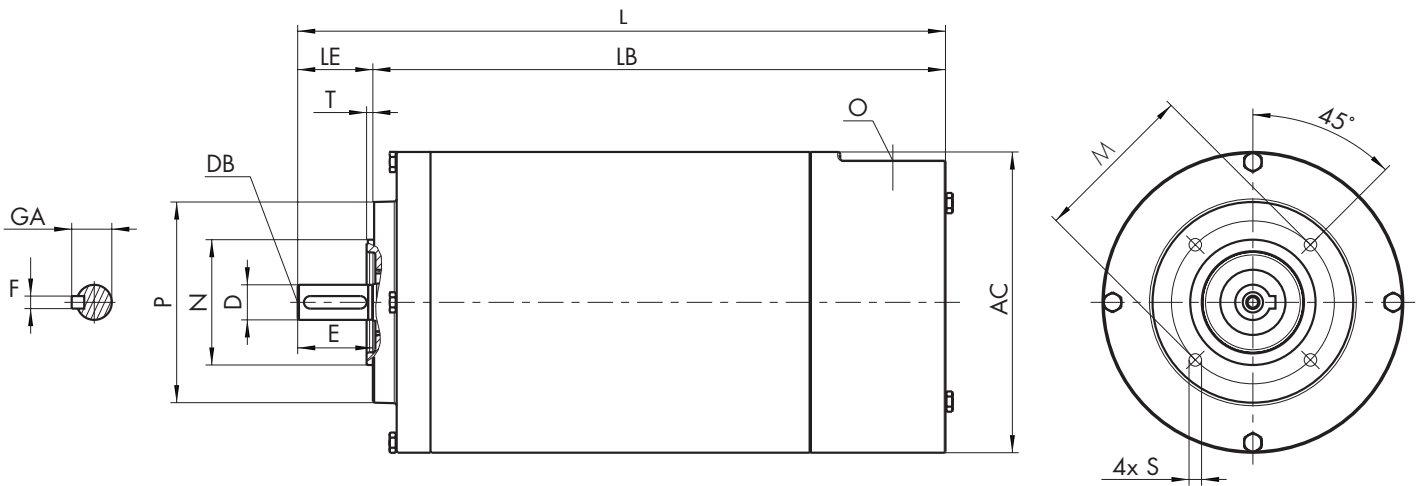


HIGH PROTECTION CLASS



EXCEPTIONALLY LONG
SERVICE LIFE

TECHNICAL DATA



Type	kW	1/min	A (400 V)	Flange and housing									Shaft AS					
				P j6	N	M	T	S	AC	L	LB	O	D k6	E	LE	GA	F	DB
SBA SBE SBH 71S/4	0,2	1.400	0,64	80	50	65	2,5	M5	120	260	230	M20 x 1,5	14	30	30	16	5	M5
90				60	75	2,5	M5											
105				70	85	2,5	M6											
SBA SBE SBH 71L/4	0,25	1.440	0,9	80	50	65	2,5	M5	120	260	230	M20 x 1,5	14	30	30	16	5	M5
90				60	75	2,5	M5											
105				70	85	2,5	M6											
SBA SBE SBH 71L/4a	0,37	1.390	1,08	80	50	65	2,5	M5	120	290	260	M20 x 1,5	14	30	30	16	5	M5
90				60	75	2,5	M5											
105				70	85	2,5	M6											

SBA = Aluminium with coating | SBE = Stainless steel | SBH = Stainless steel im hygienic design

Rehfuss Drive Solutions GmbH

Tel.: +49 7432 7015-0
Fax: +49 7432 7015-90
E-Mail: info@rehfuss.com

rehfuss.com