



STAINLESS STEEL MOTOR N



**success based on
quality and reliability**

rehfuss.com

FOR HYGIENIC APPLICATIONS

The stainless steel motor from Rehfuß is the right solution for applications in which cleaning, hygiene, corrosion resistance and the avoidance of interfering edges play an important role. A drive concept with an absolutely smooth surface (smooth body motor), without annoying cooling fins and fans. This makes it more difficult for dirt and bacteria to deposit. At the same time, the absolutely smooth surface promotes the cleaning properties enormously. The stainless steel motor N is also bristling with corrosion and withstands aggressive media.



HIGH EFFICIENCY



STAINLESS STEEL



HIGH PROTECTION CLASS



EASY CLEANING THANKS TO SMOOTH SURFACE

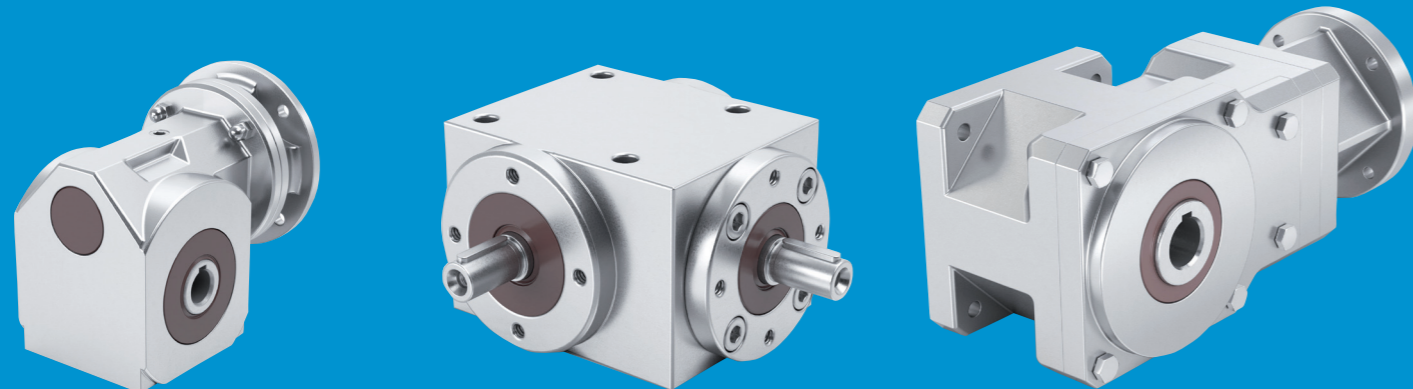


EXCEPTIONALLY LONG SERVICE LIFE



VARIATIONS:

- Can be combined with all of our stainless steel gearboxes



CHARACTERISTICS:

- Stainless steel asynchronous motor
- Smooth surface without cooling fins
- No accumulation of deposits (dirt, bacteria, ...) due to the smooth surface
- Easy and thorough cleanability
- Can also be cleaned with aggressive agents
- Suitable for frequency converter operation
- Degree of protection up to IP66
- Special shaft seal
- Painted rotor to prevent rust inside
- 4 (90°) Condensate outlets
- Laser-inscribed nameplate
- Unventilated, no possibility of turbulence
- Standards: IEC, CE, CSA, UL
- Base and flange dimensions according to IEC

OPTIONS:

- Up to size 90 available with or without fan, from 90 only with fan
- Flange design
- Foot design
- 2 or 6 pole motors
- Motors with higher power on request

PERFORMANCE DATA:

Character	Value	Unit
Sizes	63, 71, 90	(-)
Performance range	to 1,50	kW

AREAS OF APPLICATION:

- Food industry
- Beverage industry
- Pharmaceutical technology
- Chemical industry
- Environmental engineering
- Packaging machines



Reh fuss Drive Solutions GmbH

E-Mail: info@rehfuss.com
rehfuss.com

Tel.: +49 7432 7015-0
Fax: +49 7432 7015-90